

**RIZON**

PEGASUS GB

Portable Guard Booth

Common Applications

- Security Checkpoints
- Property Protection
- Employee and Visitor Access Control
- Ticket Booths
- Property Surveillance

The Rizon Pegasus GB Portable Guard Booth offers an enhanced and convenient guard booth option for your needs. Its compact footprint, and slots designed to be lifted with a forklift, makes it great for superior portability and allows it to fit wherever you need it. Its sliding door, large glass windows for visibility, built in air conditioner, all steel construction make the Pegasus GB the superior guard booth perfect for your needs.

TECHNICAL SPECIFICATIONS

RIZON BOOTHS ARE OF SINGLE UNIT WELDED STEEL CONSTRUCTION, FACTORY ASSEMBLED AND DELIVERED SET UP. FAILURE TO SECURELY ANCHOR BOOTH MAY RESULT IN OVERTURNING OF UNIT AND SERIOUS INJURY TO OCCUPANT. (SEE LAST PAGE FOR DETAILS)

SAFETY GLAZING SPECIFICATIONS – CLEAR TEMPERED SAFETY GLAZING SET IN PAINTED GALVANIZED STEEL EXTERIOR WINDOW FRAMES WITH INTERIOR ALUMINUM GLAZING STOPS.

INDUSTRIAL COATING. SHALL BE APPLIED TO ALL EXPOSED METAL SURFACES. THIS EXCLUDES ROOF SURFACE, ALUMINUM WINDOW FRAMES AND ANY STAINLESS STEEL COMPONENTS (IF USED).

ELECTRICAL – ALL WIRING BY RIZON TO BE #12(MIN) STRANDED COPPER, THHN ENCLOSED IN EMT OR FLEXIBLE METAL CONDUIT WHERE APPLICABLE PER NATIONAL ELECTRIC CODE. ALL ELECTRICAL EQUIPMENT WILL BE LISTED BY U.L. OR EQUIVALENT RECOGNIZED NATIONAL TESTING LABORATORY. ALL WIRING TO TERMINATE AT C.B. PANEL. ALL CIRCUITS HAVE GREEN GROUND WIRE.

BOOTH WILL HAVE A 3" CANOPY OVERHANG AND A 6" FASCIA ON ALL SIDES.

REMOVABLE LIFTING RING(S) ARE PROVIDED ON ROOF.

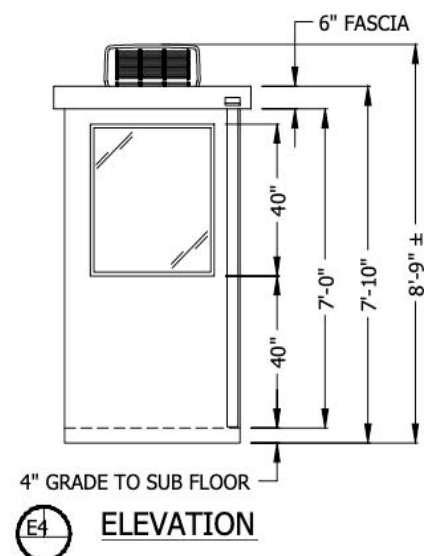
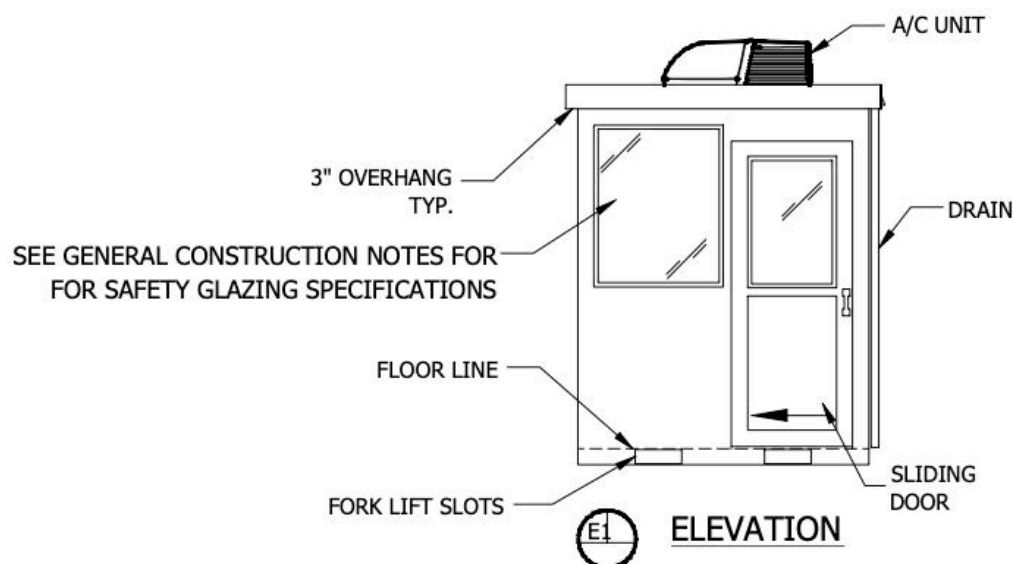
LIFTING RING(S) ARE DESIGNED FOR A STRAIGHT VERTICAL LIFT ONLY. SPREADER BARS MUST BE USED WHERE APPLICABLE TO ENSURE STRAIGHT VERTICAL LIFT. ALL WARRANTIES WILL BE VOID IF NOT LIFTED IN THIS MANNER.

NO ON SITE WORK BY RIZON.

ACTUAL LOCATION OF ELECTRICAL DEVICES MAY VARY DUE TO INSTALLATION CONSTRAINTS, SHIPPING RESTRICTIONS, OR FOR PROPER PLACEMENT TO SATISFY APPLICABLE CODES.

PEGASUS GB DIMENSIONS

Overall Weight: 2,100 LBS



PEGASUS GB Optional Anchoring Notes

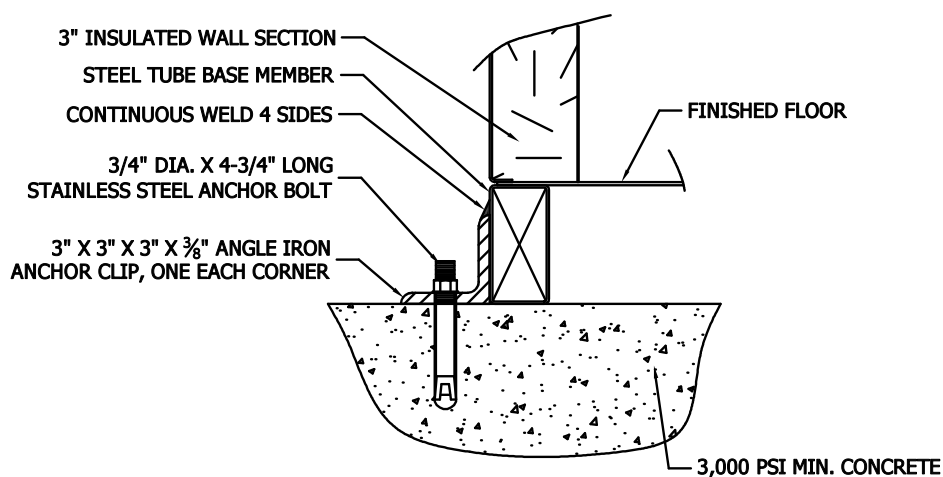
Recommended Optional Anchoring for Rizon Pegasus GB

Anchor clips are provided with pre-drilled holes for anchor bolts. Typically, the four anchor clips are provided with 3/4" or 1" holes. Size and depth of anchors should be of sufficient design to withstand the highest recorded wind speeds in the area. Consult a professional engineer with weather condition in the area. Job site electrician is responsible for connecting electric in accord with local codes.

Before final anchoring, BOOTH SHOULD BE LEVELED. Failure to securely anchor the booth in place and to properly ground the booth structure could result in injury to the occupant. Leveling the booth also reduces chances of torquing the unit out of square when tightening nuts on anchor bolts. If booth is pulled out of square due to improper anchoring, it may cause leaks, create problems with door locks, and/or hamper proper movement of doors. The product warranty is voided when booth is installed improperly or damage has occurred from improper anchoring.

We suggest you check with your local building department regarding applicable codes, and preassembled buildings in general. If utilities are brought in through slab, footings are required in most jurisdictions.

See Rizon's website, www.rizonmfg.inc, or contact your salesperson, for further information.



FIELD DRILLED ANCHOR BOLT DETAIL
NO SCALE

THIS DRAWING IS FOR REFERENCE PURPOSES ONLY.